



COMPRESSOR
PARTS & REPAIR

Features & Benefits

Helps balance individual power cylinders

- **Precise control of pressure and temperature. Allows for uniform cylinder loading and reduces the possibility of detonation.**
- **Reduce fuel consumption**
- **Reduce engine emissions**

Completely replaces old valve body

- **Allows users to replace valves that may be an odd or unusual size or be out-of-spec**

Provides precise air/fuel mixture

- **Extends the life of parts: valves, seats, rings, bearings, cylinders and pistons**

Easy flow adjustment by hand

- **Eliminates strain of using large wrenches and cheater bars. Saves time and labor.**

Contact Us Now!

800 - TRYCECO (879-2326)

5440 Alder Dr.
Houston, Texas 77081

Fax 713-664-6444

TRYCECO.com

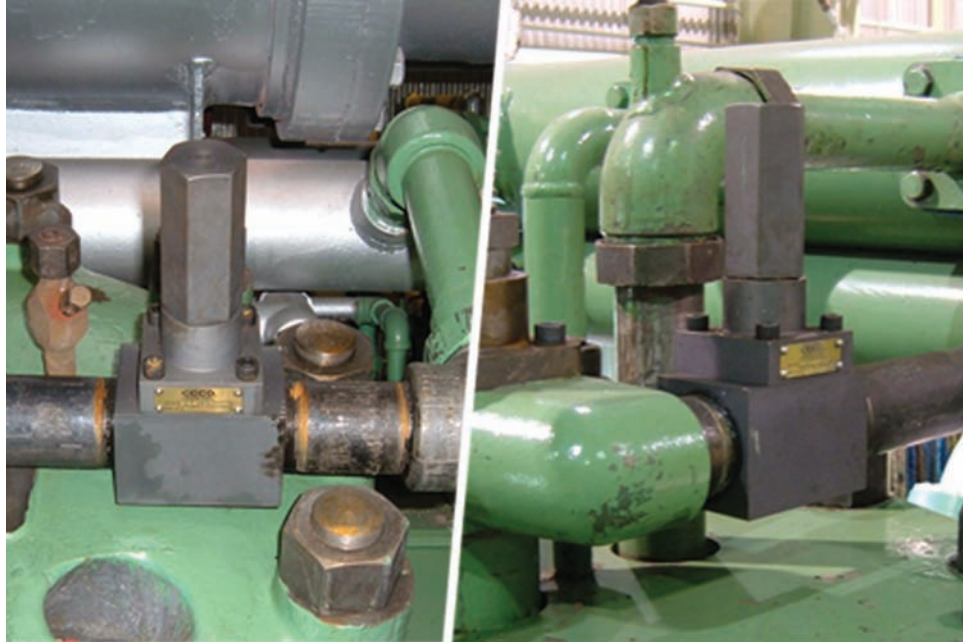
TRYCECO@ceconet.com

Form 1866, January 2010

Fine-tune air and fuel

Fuel Gas Modulators

For Clark®, Cooper®, and Worthington engines



truBalance Precision control of your air/fuel mixtures!

Do you maintain engines? If so, you're familiar with the hassles of adjusting air/fuel mixtures. With OEM valves, precise control is extremely difficult. To further complicate matters, a large wrench and cheater bar are often required to make adjustments. CECO truBalance fuel gas modulators are easy to install and are designed to accurately control gas flow to each individual power cylinder. Adjustment is quickly done by hand. The full body design is available in three sizes: 1", 1.5" and 2" female NPT (National Pipe Thread).



Quick installation & precise control!

Delivering superior products and services to the gas transmission, gas processing & petrochemical industries since 1964.

© 2010 Compressor Engineering Corporation
® CECO is a registered trademark of Compressor Engineering Corporation.
All other company names and models listed are registered trademarks of their respective owners.