



COMPRESSOR
PARTS & REPAIR

Features & Benefits

Helps balance individual power cylinders

- **Precise control of pressure and temperature. Allows for uniform cylinder loading and reduces the possibility of detonation.**
- **Reduce fuel consumption**
- **Reduce engine emissions**

Completely replaces old valve body

- **Allows users to replace valves that may be an odd or unusual size or be out-of-spec**

Provides precise air/fuel mixture

- **Extends the life of parts: valves, seats, rings, bearings, cylinders and pistons**

Easy flow adjustment by hand

- **Eliminates strain of using large wrenches and cheater bars. Saves time and labor.**

Contact Us Now!

800 - TRYCECO (879-2326)

5440 Alder Dr.
Houston, Texas 77081

Fax 713-664-6444

TRYCECO.com

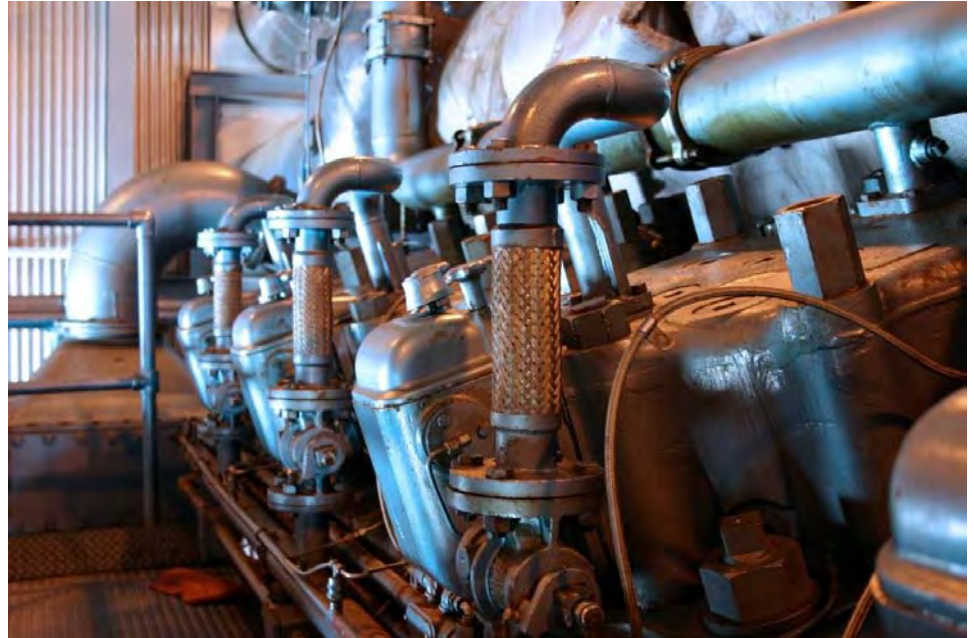
TRYCECO@ceconet.com

Form 2008, January 2010

Fine-tune air and fuel

Fuel Gas Modulators

For Cooper® engines only: Models W330, - V250 - V275. 1 piece flanged modulator.



truBalance Precision control of your air/fuel mixtures!



Quick installation & precise control!

Delivering superior products and services to the gas transmission, gas processing & petrochemical industries since 1964.

© 2010 Compressor Engineering Corporation
© CECO is a registered trademark of Compressor Engineering Corporation.
All other company names and models listed are registered trademarks of their respective owners.