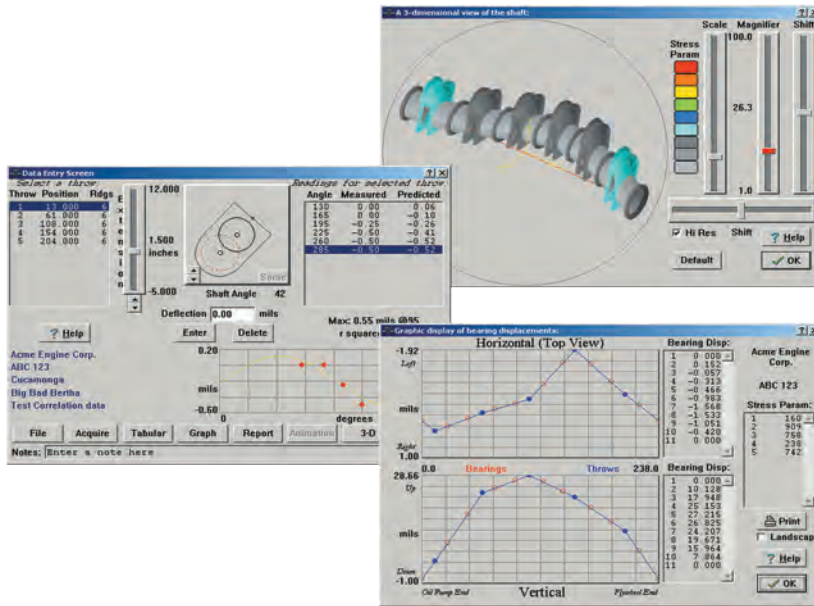


# TRAINING & TECHNICAL SERVICES

# WEBMAP® 2.0

Comprehensive software saves operation and maintenance dollars



- Automatic data acquisition
- English / metric operation
- Larger machines handling
- More readings per throw
- Graph of input data
- Copy of 3-D image
- Protection from accidental changes
- Includes sample files for several popular engines
- Avoid crankshaft failure
- Comprehensive software package
- Precise demonstration of measured data

## OVERVIEW

**WebMap®** is based on original development work by Ray W. James, P.E. Ph.D., with further development by SWRI's Mechanical and Fluids Division and Culverston Software for the Gas Machinery Research Council. SwRI and GMRC developed the **WebMap®** software to provide simplified input of crankshaft geometry and the systematic collection of the web deflection measurements.

Crankshaft deflection measurements help to assess the alignment of large stationary engines.

The **WebMap®** software is a great analytical tool to collect, view, process data and run trial adjustments (when needed) to set any necessary adjustments to realign the crankshaft.

This software also gives you the capabilities to store and retrieve past measurements for analysis, trending, and simplification.



## CONTACT US

5440 Alder Dr.  
Houston, Texas 77081

Phone  
800-836-7333  
800-TRY-CECO  
800-879-2326

Fax  
713-664-6444

Email  
training@ceconet.com  
www.tryceco.com

© CECO is a registered trademark of Compressor Engineering Corporation.  
© 2011 Compressor Engineering Corporation  
Form 2133-2 9/11  
All other company names and models listed are registered trademarks of their respective owners.